

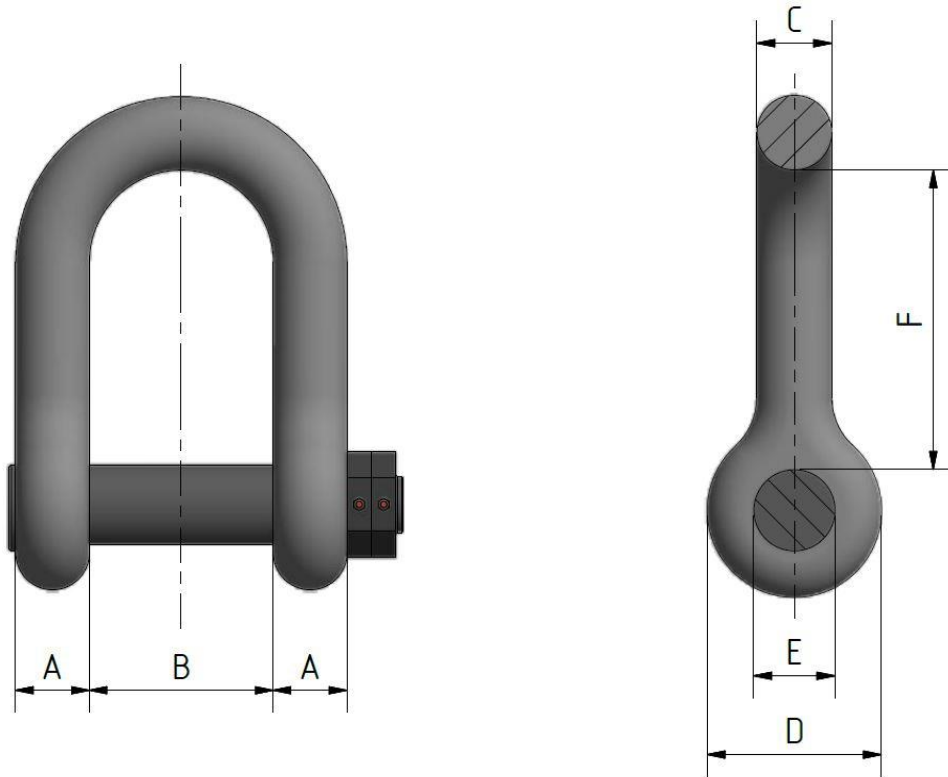
# Shackles



## Double Nut Shackle

*Offshore accessory to be used for LTM Temporary and Mobile Mooring*

*Bow and Pin dimensions according to ISO 1704*



**Custom dimensions according to clients requirements**

Application:	LTM, for connection of enlarged link to the anchor
Manufactured & Tested:	in Germany by Feubo
Material:	Forged Steel – all grades R3 - R5
Features:	Double secured nut for LTM application